

SATTEC[®]

SATTEC[®]

赛泰克（成都）工业设备有限公司



SPLIT FRAME PIPE CUTTING AND BEVELING MACHINE

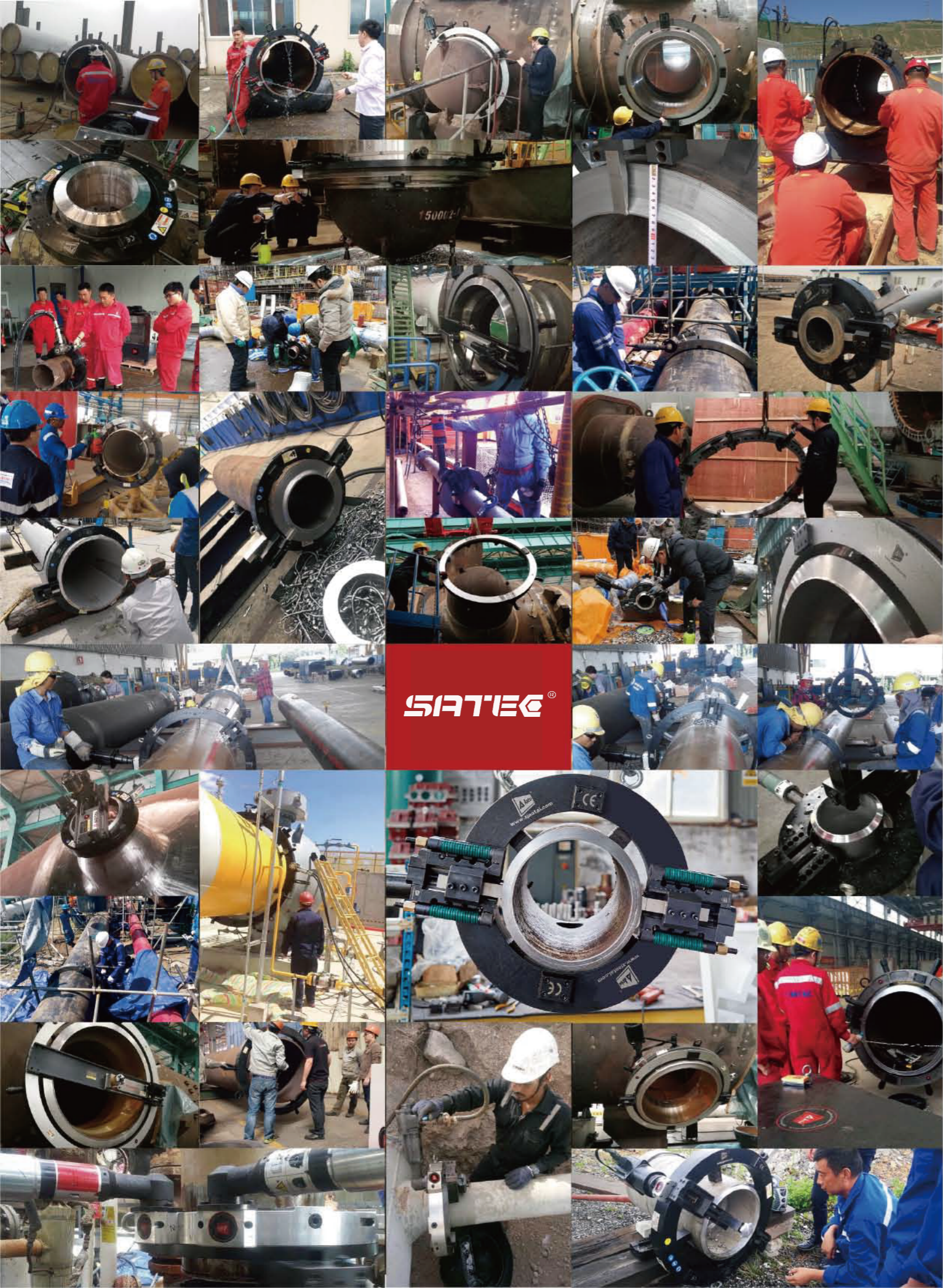
外部安装式管子切割坡口机

赛泰克（成都）工业设备有限公司

地址：四川省成都市成华区龙绵街1666号1栋1单元1001

电话：400-1028-338





SATIE®

SM MINI SPLIT FRAME PIPE CUTTING AND BEVELING MACHINE 微型外部安装式管子切割坡口机

产品简介 / Overview

小直径轻便型分瓣式管子切割坡口机，针对小直径管道现场切割研发的一款轻便型切割工具。机体为对开式圆环结构，拆分和组合非常便捷，可安装于管线的任何位置。本系列产品是最小型和最紧凑的轻便型分瓣式管道切割坡口机，其设计巧妙，机构紧凑，体积小，避免干涉，尤其适用于狭窄施工的地方，如排管、弯管、管道支架等，在锅炉，发电，石油，天然气和造船等行业中广泛用途。

Mini split frame pipe cutting and beveling machine used by pipefitters and welders in weld preparation for industrial pipe. smartly designed, ability to split in half at the frame, easy to install on the pipe line. This series product is the most small and compact split frame clamshell style, small size, avoid interference, especially suitable for tight places, such as exhaust pipe, elbow, pipe racks, etc., mainly used in boiler, power generation, oil, gas and shipbuilding. Nine models are available in 0.5 or 1inch (25.4mm) increments, with additional sizes available by special order.

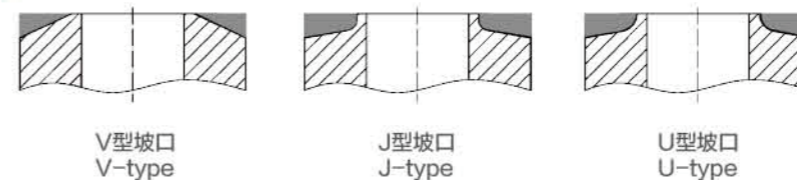


产品特点 / Features

- 1、铝合金机体，重量轻，单手可操作
- 2、合页式对开式机体，可安装于管线任何位置
- 3、一次装夹，切割和坡口同时进行
- 4、完全的冷切割方式，不改变管子材质
- 5、自动进刀，无须手动调整，高效率，高品质
- 6、可加工的切割坡口形式：U型，V型，J型
- 7、9个型号，适用范围：12.5-152.4mm
- 8、单台范围跨度0.5" 或1"
- 9、可选驱动方式：电动式，气动式

- Cutting, beveling and counterboring
- Clever designed, small size, avoid interference.
- Aluminum body, light weight, one - handed operation.
- Out-mounted style, clamping by multipoint jaws.
- Split frame technology, easy to install on the pipeline.
- Cold cutting and beveling, don't influence the pipe's material.
- Auto feed, cutting and beveling at the one time, cost effective.
- Variety of beveling shape: "U", "V", "J".
- Non-standard model can be customized
- 9 models are available in pipe OD 1/2" -6"
- Electric. Pneumatic drive options are available.

坡口类型 / Beveling Shape



坡口类型及坡口角度，以及加工管道材质，请订购前申明 Other beveling shape, angle and pipe material, please declare before order

技术参数 / Specification

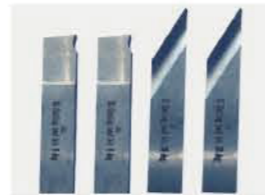
规格型号 Model		加工范围 Capacity OD		切削壁厚 Wall thickness	刀盘转速 Rotating
电动 Electric	气动 Pneumatic	mm	inch	mm	rpm
SISD1	SISF51	Φ12.5~25.4	0.5"~1"	≤15	34
SISD1.5	SISF51.5	Φ25.4~38.1	1"~1.5"	≤15	24
SISD2	SISF52	Φ38.1~50.8	1.5"~2"	≤15	23
SISD2.5	SISF52.5	Φ50.8~63.5	2"~2.5"	≤15	23
SISD3	SISF53	Φ63.5~76.2	2.5"~3"	≤15	23
SISD3.5	SISF53.5	Φ76.2~88.9	3"~3.5"	≤15	23
SISD4	SISF54	Φ88.9~101.6	3.5"~4"	≤15	20
SISD5	SISF55	Φ101.6~127	4"~5"	≤15	20
SISD6	SISF56	Φ127~152.4	5"~6"	≤15	14

相关技术参数仅供参考，不作为最终交货标准 Above parameters just for reference only, not acceptance criteria

轻便型成型刀 / Tooling

材质: M42和 M35
种类: 切断刀, 坡口刀
角度: 0度, 30度, 37.5度

Material: HSS-Co M42 and HSS M35
Type: Sever, Bevel,
Angle: 0degree, 30degree, 37.5degree



动力参数 / Power Supplies

1、电动式 Electric:
电源要求: 50~60Hz, 220V, 1P
功率: 1.43KW
可选配充电式电机
Electric requirement: 220V 1PH 50/60HZ
Power: 1.43KW
Battery Motor Optional

2、气动式 Pneumatic:
气源要求: 1500~2000L/min@ 0.63~0.8Mpa
功率: 1.1HP或2HP
Air requirement: 1500~2000L/min @0.63~0.8Mpa
Power: 1.1HP or 2HP



SS STANDARD SPLIT FRAME PIPE CUTTING AND BEVELING MACHINE 标准型分瓣式管子切割坡口机

产品简介 / Overview

赛泰克标准型分瓣式管子切割坡口机, 依照国际通用管道标准设定加工范围, 可对各种规格的管道, 容器, 法兰进行单切断或单坡口加工, 更可以同时完成切断坡口加工, 还可以进行复合型坡口及法兰面加工。其设计巧妙, 安装和操作十分简单, 机体为对开式圆环结构, 拆分和组合非常便捷, 可安装于管线的任何位置, 是一种可移动的管道切割坡口机床, 适用于各种等级的碳钢、不锈钢、合金钢等金属材质和特殊的硬质工程材料切割坡口加工, 广泛应用于石油、化工、天然气、食品、锅炉、制药、核电、场馆建设等行业的管线安装工程及管道抢修作业的现场。

Standard split frame pipe cutting and beveling machine, designed to cut, bevel, single point, counterbore and face on the pipe, tube and flanges. It is a portable pipe cutting and beveling machine tools of clamshell style. smartly designed, ability to split in half at the frame, easy to install on the pipe line. It is comprehensive used in pipework of oil, gas, food, petroleum, chemical, boiler, medicine machine, nuclear power, and power supply construction. 16 models are available in 6inch (152.4mm) increments, with additional sizes available by special order.

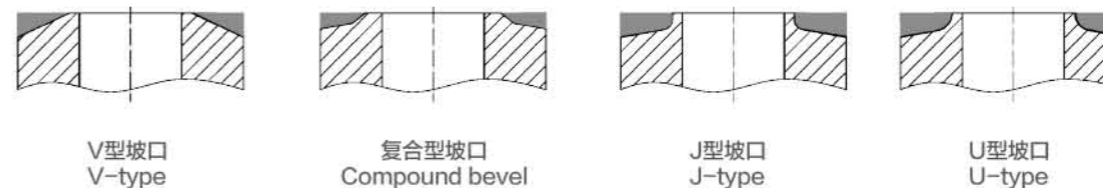


产品特点 / Features

- 1、单台机器直径跨度为6英寸
- 2、16个型号, 适用范围: 20~1240mm
- 3、一次装夹, 切割和坡口同时进行
- 4、完全的冷切割方式, 不改变管子材质
- 5、自动进刀, 无须手动调整, 高效率, 高品质
- 6、合叶式对开式机体, 分瓣安装于管线任何位置
- 7、固定环为铝合金或合金钢, 动环为合金钢
- 8、更多加工附件可选, 便于提高性能和扩展加工能力
- 9、可选驱动方式: 电动式, 气动式, 数控式, 液压式
- 10、可加工的切割坡口形式: U型, V型, J型以及双V型和复合型
- 11、驱动头安装方式有直联和直交可选, 避免干涉, 满足最佳位置安装要求

- 16 models, Working range for pipe OD 1" -48"
- Non-standard model can be customized
- Out-mounted style, clamping by multipoint jaws
- Split frame technology, easy to install on the pipeline
- Cold cutting and beveling, don't influence the pipe's material
- Auto feed, cutting and beveling at the one time, cost effective
- Variety of beveling shape: U,V,Y,J and compound bevels
- Stationary ring is steel; rotation ring is aluminum, and steel optional
- Electric, pneumatic, NC and hydraulic drive optional
- Several different drive options are available to best position the motor for a specific machining application
- It can be equipped a wide range of accessories to increase performance and expand capabilities.

坡口类型 / Beveling Shape



坡口类型及坡口角度, 以及加工管道材质, 请订购前申明 Other beveling shape, angle and pipe material, please declare before order

技术参数 / Specification

规格型号 Model				加工范围 Capacity OD		加工壁厚 wall Thickness mm		刀盘转速 Rotating
电动式 Electric	气动式 Electric	数控式 NC	液压式 Hydraulic	mm	inch	单刀 Single	叠刀 Multi	rpm
SISD-90	SISF-90	SSKD-90	SHYD-90	Φ20~90	3/8"-3"	30	-	34
SISD-168	SISF-168	SSKD-168	SHYD-168	Φ25~168	1"-6"	30	50	24
SISD-219	SISF-219	SSKD-219	SHYD-219	Φ50~219	2"-8"	30	50	23
SISD-273	SISF-273	SSKD-273	SHYD-273	Φ114~273	4"-10"	30	75	23
SISD-323	SISF-323	SSKD-323	SHYD-323	Φ168~323	6"-12"	30	75	23
SISD-355	SISF-355	SSKD-355	SHYD-355	Φ177~355	8"-14"	30	110	23
SISD-406	SISF-406	SSKD-406	SHYD-406	Φ254~406	10"-16"	30	110	22
SISD-457	SISF-457	SSKD-457	SHYD-457	Φ323~457	12"-18"	30	110	20
SISD-508	SISF-508	SSKD-508	SHYD-508	Φ355~508	14"-20"	30	110	20
SISD-559	SISF-559	SSKD-559	SHYD-559	Φ406~559	16"-22"	30	110	14
SISD-610	SISF-610	SSKD-610	SHYD-610	Φ457~610	18"-24"	30	110	14
SISD-762	SISF-762	SSKD-762	SHYD-762	Φ610~762	24"-30"	30	110	13
SISD-914	SISF-914	SSKD-914	SHYD-914	Φ762~914	30"-36"	30	110	11
SISD-1066	SISF-1066	SSKD-1066	SHYD-1066	Φ914~1066	36"-42"	30	110	10
SISD-1160	SISF-1160	SSKD-1160	SHYD-1160	Φ980~1160	38"-44"	30	110	9
SISD-1240	SISF-1240	SSKD-1240	SHYD-1240	Φ1040~1240	40"-48"	30	110	9

相关技术参数仅供参考，不作为最终交货标准 Above parameters just for reference only, not acceptance criteria

驱动方式 / Power Supplies

电动式：能源供应方便，性能稳定，应用广泛

电源要求：220V 1PH 50/60HZ

老款电机：1.43KW 新款无刷电机：1.5kw,2.0kw,3.0kw

Electric: Convenient power supply, Stable Performance, Popular choice

Electric requirement: 220V 1PH 50/60HZ

Carbon brush Motor: 1.43KW, 1.7KW, 2.4KW Brushless Motor: 1.5KW, 2.0KW, 3.0KW

Double motor for big model or heavy duty

气动式：安全防爆，性能稳定，便于维护

气源要求：1500-3500L/min@0.63-0.8Mpa 功率：2HP,3HP,4HP

Pneumatic: Explosion Proof, Stable Performance, Easy to maintenance

Air requirement: 1500-3500L/min @0.63-0.8Mpa Power: 2HP, 3HP, 4HP

Double motor for big model or heavy duty

数控式：动力强劲，噪音低，性能稳定，高承载，可连续作业

电源要求：220V 1PH 50/60Hz或380V 3PH 50/60Hz 功率：1.5kw,2KW,3KW

NC: Powerful drive, High efficiency Low noise, Stable Performance Ideal for heavy wall thickness & large size pipe

Electric requirement: 220V 1PH 50/60Hz; 380V 3PH 50/60Hz Power: 2.0KW or 3.0KW

Double motor for big model or heavy duty

液压式：动力强劲，噪音低，性能稳定，高承载，可连续作业

液压要求：28-50L/min @13Mpa 适配电源：380V 3PH 50/60Hz

Hydraulic: Powerful drive, High efficiency Stable Performance, Low noise, Anti-explosion Ideal for heavy wall thickness & large size pipe

Hydraulic requirement: 28-50L/min @13Mpa Electric requirement: 380V 3PH 50/60Hz



刀具 / Tooling

为了满足加工现场的各种要求，我们有丰富的刀具种类可供选择，更可以按照客户需求订制不同角度，不同尺寸的刀具。

Options of form type and insert type tools Available for cutting all thickness and material of pipe and beveling at any required angle.

1. 成型刀具

材质：M42和M35

种类：切断刀,坡口刀,双坡口刀,复合坡口刀,内坡口刀

角度：0°, 30°, 37.5° (标配); 双面30°, 37.5° +10° (选配)

Form Type

Material: M42 or M35

Kinds: Cut off, bevels, Double bevels, Compound bevels

Angle: 0°, 30°, 37.5°, double 30° / 37.5°, 37.5° +10°



2. 嵌入式刀具

刀柄材质：40Cr 刀片材质：硬质合金

种类：切断刀,坡口刀,双面坡口刀,复合坡口刀

角度：0°, 30°, 37.5°, 双面30°, 37.5° +10°

Insert Type

Material: Tool holder: 40Cr; Insert: CSS or Carbide

kinds: Cut off, bevels, Double bevels, Compound bevels

Angle: 0°, 30°, 37.5°, double 30° / 37.5°, 37.5° +10°



刀架 / Tool slide

更实用，多途径，更多解决方案 More Practical, More Ways, More Solutions



1. 标准刀架

适用常见的规格管道

单刀最大切割管壁：30mm

叠刀最大切割管壁：110mm

最大行程：154mm

Standard Tool Slide

Used for conventional pipe

Wall thickness of single point: 30mm

Wall thickness of multi point: 110mm

Radial travel: 154mm



2. 圆度补偿刀架

适用于变形的椭圆管道

最大切割壁厚：110mm

最大行程：110mm

OD Tacking Slide

Solution for out-of-round pipe

The max. wall thickness: 110mm

Radial travel: 110mm



3. 钻铣复合加工刀架

钻铣一体

克服应力集中的危害

提高切削效率

Drilling and Milling slide

Solution for problem of stress damage to the tool

Improve the cutting efficiency

Improve the safe factor



4. 管外壁加工刀架

管外壁修整，去除防腐层

径向行程：110mm

轴向行程：200mm

Surface turning slide

Surface turning, removal anti-corrosion layer

Radial travel: 110mm Axle travel: 200mm



5. 内坡口刀架

用于管道内壁坡口

径向行程：110mm

轴向行程：100mm

Counterbore slide

Used for pipe inside diameters.

Radial travel: 110mm Axle travel: 100mm



6. 桥式刀架

超厚壁管坡口 内径加工

加工法兰面

Bridge slide

Single point heavy wall machining

Flange facing

Counterboring



SH HEAVY DUTY SPLIT FRAME PIPE CUTTING AND BEVELING MACHINE

重型外部安装式管子切割坡口机

产品简介 / Overview

重型分瓣式管子切割坡口机，是针对厚壁管、大直径等重型管道的切割坡口加工，以及法兰面加工而研发的一种便携式机床。总共8个型号，切屑管径范围：305mm-3050mm,单个型号切割直径跨度为12英寸。机体同样为对开式圆环结构，拆分和组合非常便捷，可安装于管线的任何位置。本系列产品以其超大加工范围，超强切削能力，在核电，热能，石油，天然气和造船等行业管道和法兰的检修工程和安装现场得到了广泛应用，深受广大用户认可。

Heavy duty split frame pipe cutting and beveling machine, designed to cut, bevel, single point, counterbore and face on the Heavy wall pipe and flanges. Ideal for wide diameter range 12" in the one machine, and 8 models are available from 12" to 120". It is a portable pipe cutting and beveling machine tools of clamshell style. ability to split in half at the frame, easy to install on the pipe line. It is comprehensive used in pipework of oil, gas, petroleum, chemical, boiler, nuclear power, and power supply construction.

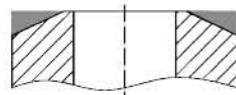


产品特点 / Features

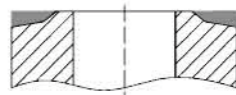
- 1、单台设备加工范围大，直径跨度达12"
- 2、适用管径范围：12" -120" /305-3050mm
- 3、承载能力大，适用于重型管道的切割坡口一体加工
- 4、合叶式对开式机体，可安装于管线任何位置
- 5、完全的冷切割方式，不改变管子材质
- 6、自动进刀，无须手动调整，高效率，高品质
- 7、驱动方式：电动式，气动式，数控式，液压式
- 8、双驱动或多驱动接口，满足大型或重型管道加工要求

- Used for heavy wall pipe cutting and beveling, and flange facing
- 8 models, Working range for pipe OD 12" -120"
- Ideal for wide diameter range 12" in the one machine
- Out-mounted style, clamping by multipoint jaws
- Split frame technology, easy to install on the pipeline
- Cold cutting and beveling, don't influence the pipe's material
- Auto feed, cutting and beveling at the one time, cost effective
- Variety of beveling shape: "U", "V", "J", double "V", compound bevels
- Electric, pneumatic, numerical controller and hydraulic drive options are available

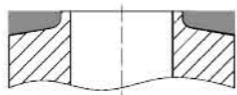
坡口类型 / Beveling Shape



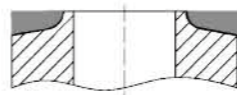
V型坡口
V-type



复合型坡口
Compound bevel



J型坡口
J-type



U型坡口
U-type

坡口类型及坡口角度，以及加工管道材质，请订购前申明 Other beveling shape, angle and pipe material, please declare before order

技术参数 / Specification

型号 Model				加工范围 Capacity OD		切削壁厚 Wall thickness	刀盘转速 Rotating
电动 Electric	气动 Pneumatic	数控 NC Electric	液压 Hydraulic	mm	inch	mm	rpm
SISD-2412H	SISF-2412H	SSKD-2412H	SHYD-2412H	Φ305-610	12"-24"	≤110	14
SISD-3624H	SISF-3624H	SSKD-3624H	SHYD-3624H	Φ610-914	24"-36"	≤110	11
SISD-4836H	SISF-4836H	SSKD-4836H	SHYD-4836H	Φ914-1240	36"-48"	≤110	9
SISD-6048H	SISF-6048H	SSKD-6048H	SHYD-6048H	Φ1220-1524	48"-60"	≤110	5
SISD-7560H	SISF-7560H	SSKD-7560H	SHYD-7560H	Φ1524-1910	60"-75"	≤110	4
SISD-9075H	SISF-9075H	SSKD-9075H	SHYD-9075H	Φ1910-2290	75"-90"	≤110	4
SISD-10590H	SISF-10590H	SSKD-10590H	SHYD-10590H	Φ2290-2680	90"-105"	≤110	3
SISD-120105H	SISF-120105H	SSKD-120105H	SHYD-120105H	Φ2680-3050	105"-120"	≤110	2

相关技术参数仅供参考，不作为最终交货标准 Above parameters just for reference only, not acceptance criteria

动力参数 / Power Supplies

1、电动式：

能源供应方便，性能稳定，应用广泛

电源要求：230V 1PH 50/60HZ

功率：1.7KW 或2.4KW 大型号选用双驱动

Electric:

Convenient power supply Stable Performance Popular choice

Electric requirement: 220-240V 1PH 50/60HZ

Power: 1.7KW,2.4KW Double motor for big model or heavy duty



2、气动式：

安全防爆，性能稳定，便于维护

气源要求：1500-3500L/min@0.63-0.8Mpa

功率：3HP或4HP 大型号选用双驱动

Pneumatic:

Explosion Proof Stable Performance Easy to maintenance

Air requirement: 1500-3500L/min @0.63-0.8Mpa

Power: 3HP,4HP Double motor for big model or heavy duty



3、数控式：

动力强劲性能稳定，高承载，可连续作业

电源要求：230V 1PH 50/60Hz或380V 3PH 50/60Hz

功率：2.0KW或3.0KW 大型号选用双驱动

NC Electric:

High efficiency low noise ,stable performance Ideal for heavy duty

Electric requirement: 230V 1PH 50/60Hz; 380V 3PH 50/60Hz

Power: 2.0KW or 3.0KW Double motor for big model or heavy duty



4、液压式：

动力强劲，噪音低，性能稳定，安全防爆

液压要求：28-50L/min @13Mpa; 适配电源：380V 3PH 50/60Hz

Hydraulic:

Powerful drive, High efficiency Stable Performance, Low noise, Anti-explosion Ideal for heavy wall thickness & large size pipe

Hydraulic requirement: 28-50L/min @13Mpa Electric requirement: 380V 3PH 50/60Hz



刀具 / Tooling

为了满足加工现场的各种要求, 我们有丰富的刀具种类可供选择, 更可以按照客户需求定制不同角度, 不同尺寸的刀具。

Options of form type and insert type tools Available for cutting all thickness and material of pipe and beveling at any required angle.

1. 成型刀具

材质: M42和M35

种类: 切断刀, 坡口刀, 双坡口刀, 复合坡口刀, 内坡口刀

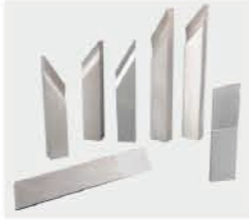
角度: 0°, 30°, 37.5° (标配); 双面30°, 37.5° +10° (选配)

Form Type

Material: M42 or M35

Kinds: Cut off, bevels, Double bevels, Compound bevels

Angle: 0°, 30°, 37.5°, double 30° / 37.5°, 37.5° +10°



2. 嵌入式刀具

刀柄材质: 40Cr 刀片材质: 硬质合金

种类: 切断刀, 坡口刀, 双面坡口刀, 复合坡口刀

角度: 0°, 30°, 37.5°, 双面30°, 37.5° +10°

Insert Type

Material: Tool holder: 40Cr; Insert: CSS or Carbide

kinds: Cut off, bevels, Double bevels, Compound bevels

Angle: 0°, 30°, 37.5°, double 30° / 37.5°, 37.5° +10°



刀架 / Tool slide

更实用, 多途径, 更多解决方案 More Practical, More Ways, More Solutions



1、大行程刀架

单刀加工: 最大切割管壁30mm

叠刀加工: 最大切割管壁110mm

最大行程: 305mm

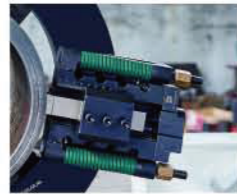
Heavy duty Tool Slide

Used for conventional pipe

Wall thickness of single point: 30mm

Wall thickness of multi point: 110mm

Radial travel: 305mm



2、圆度补偿刀架

适用于变形的椭圆管道

最大切割壁厚: 110mm

最大行程: 110mm

OD Tacking Slide

Solution for out-of-round pipe

The max. wall thickness: 110mm

Radial travel: 110mm



3、钻铣复合加工刀架

钻铣一体

克服应力集中的危害

提高切削效率

Drilling and Milling slide

Solution for problem of stress

damage to the tool

Improve the cutting efficiency

Improve the safety factor



4、管外壁加工刀架

管外壁修整, 去除防腐层

径向行程: 110mm

轴向行程: 200mm

Surface turning slide

Surface turning, removal anti-corrosion layer

Radial travel: 110mm Axle travel: 200mm



5、内坡口刀架

用于管道内壁坡口

径向行程: 110mm

轴向行程: 100mm

Counterbore slide

Used for pipe inside diameters.

Radial travel: 110mm Axle travel: 100mm



6、桥式刀架

超厚壁管坡口 内径加工

加工法兰面

Bridge slide

Single point heavy wall machining

Flange facing

Counterboring

SATTEC®

